

# KARIBAN

K237

## Ray > Short-sleeved striped polo shirt

- Rugby-style polo shirt with wide stripes.
- Soft and comfortable to the touch.
- Made from 100% washed cotton jersey.

100% washed cotton jersey. Soft-touch. Broad two-tone side seamed stripes. Shirt style collar. 3-button placket. 1x1 ribbed cuffs. Braided side slits and twin needle hem.

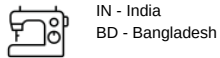


### More information

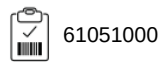
#### Logistic



#### Country of origin



#### Customs code



# KARIBAN

K237

Ray > Short-sleeved striped polo shirt

**Dimensions (cm)**

# KARIBAN

K237

Ray > Short-sleeved striped polo shirt

## Colours information

Logistic  5  20

Sizes	Width (cm)	Height (cm)	Length (cm)	Net weight (kg)	Gross weight (kg)	Pieces/Box	Pieces/Bundle
-------	------------	-------------	-------------	-----------------	-------------------	------------	---------------