

KARIBAN

K561

Fisherman's smock

- Enzyme-washed fabric, excellent printability.
- Cotton canvas for a durable and hard-wearing fabric.
- Sailing Collection.

100% cotton canvas. Enzyme-washed. Large inside pocket. Side slits. Front opening fastened with 1 button. This product has been specially treated and appears intentionally aged. This manufacturing process results in colour variations between products and makes each piece unique.



XXS XS S M L XL XXL 3XL



310 g/m²



More information

Logistic



1



10

Country of origin



IN - India
BD - Bangladesh

Customs code



62052000

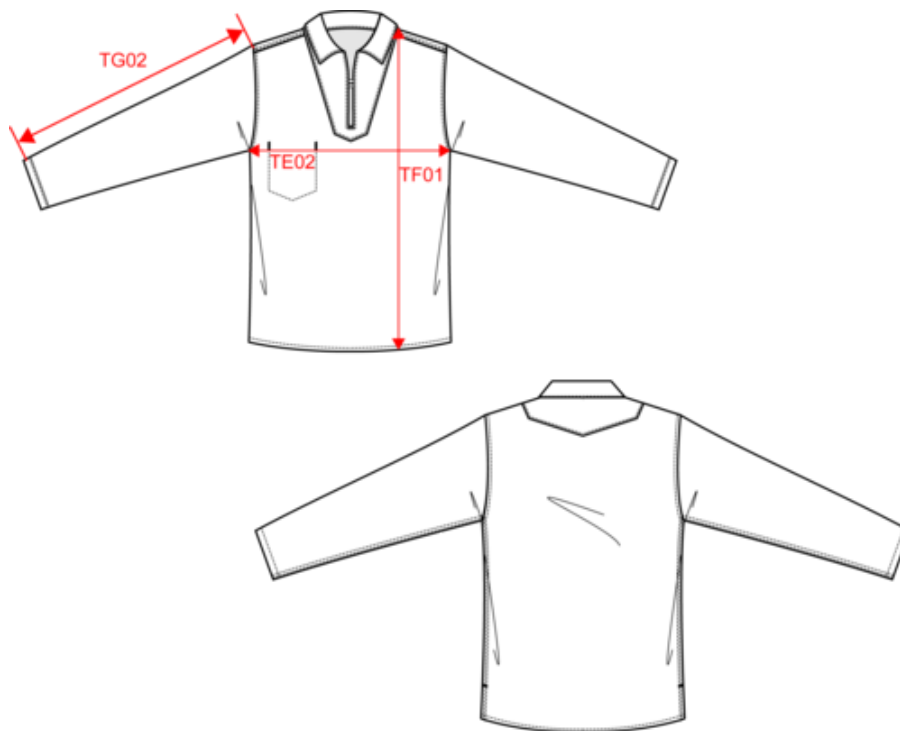


KARIBAN

K561

Fisherman's smock

Dimensions (cm)



Measurements in cm	XXS	XS	S	M	L	XL	XXL	3XL
TE02 - 1/2 chest width at armhole bottom line	49.00	52.00	55.00	58.00	61.00	64.00	67.00	70.00
TF01 - Total height from HSP	70.50	72.50	74.50	76.50	78.50	80.50	82.50	84.50
TG02 - Long sleeve length	60.50	61.50	62.50	63.50	64.50	65.50	66.50	67.50

KARIBAN

K561

Fisherman's smock

Colours information



Brick Red

RVB : 129,59,61
Pantone C : 499C
Pantone TCX : 19-1532TCX



Mellow Yellow

RVB : 228,167,36
Pantone C : 7555C
Pantone TCX : 14-0951TCX



Navy

RVB : 41,46,56
Pantone C : 433C
Pantone TCX : 19-4012TCX



Vintage Denim

RVB : 67,80,107
Pantone C : 7545C
Pantone TCX : 19-3929TCX

Logistic



1



10

Sizes	Width (cm)	Height (cm)	Length (cm)	Net weight (kg)	Gross weight (kg)	Pieces/Box	Pieces/Bundle
XXS	40.00	17.00	60.00	0.00000	0.00000	10	0
XS	40.00	17.00	60.00	0.00000	0.00000	10	0
S	40.00	17.00	60.00	0.00000	0.00000	10	0
M	40.00	17.00	60.00	0.00000	0.00000	10	0
L	40.00	17.00	60.00	0.00000	0.00000	10	0
XL	40.00	19.00	60.00	0.00000	0.00000	10	0
XXL	40.00	19.00	60.00	0.00000	0.00000	10	0
3XL	40.00	19.00	60.00	0.00000	0.00000	10	0