

# KARIBAN


K701

## Kids' jogging bottoms

- The essential joggers now in a soft and comfortable fabric.
- Made from combed cotton that is supple and comfortable to wear.
- Casual, relaxed look. Lounge Collection.

80% combed cotton/20% polyester. Brushed fleece. 2 side pockets and 1 rear patch pocket. Deep ribbed elasticated waistband. 1x1 ribbed ankles.



6/8 ans 8/10 ans 10/12 ans 12/14 ans  300 g/m<sup>2</sup>



### More information

#### Logistic



1



20

#### Country of origin



PK - Pakistan  
BD - Bangladesh

#### Customs code



61046200



### Also available in version



K700

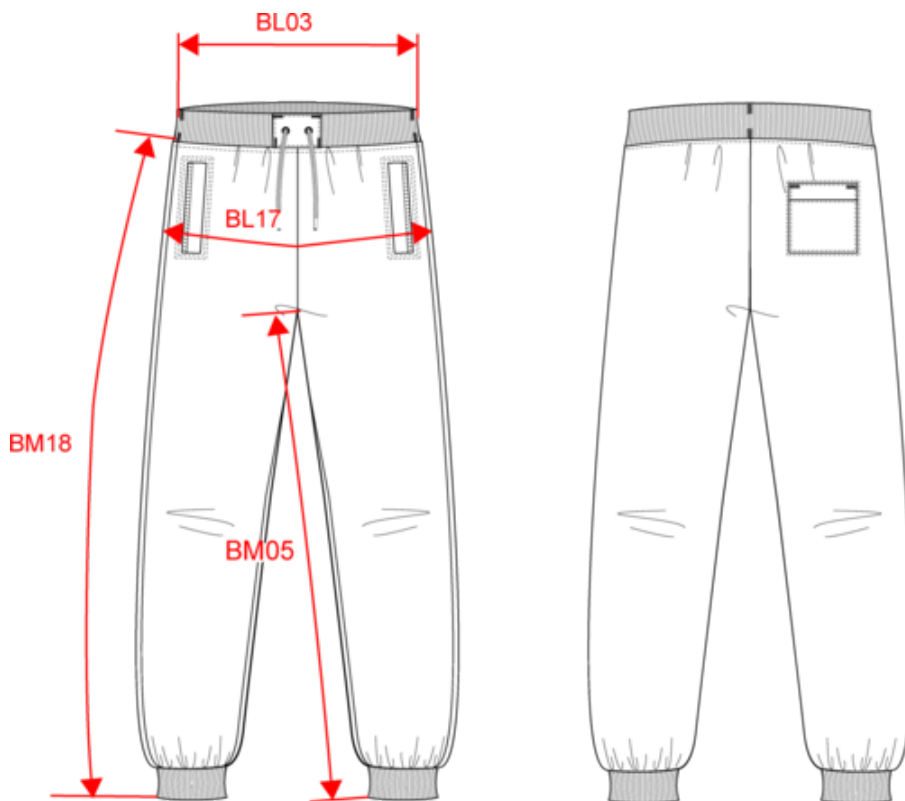


# KARIBAN

K701

Kids' jogging bottoms

Dimensions (cm)



Measurements in cm	6/8 ans	8/10 ans	10/12 ans	12/14 ans
BL03 - 1/2 elasticated waist width relaxed (front over back)	28.00	30.00	32.00	34.00
BL17 - 1/2 hip width (measured parallel to waistband)	37.00	39.00	41.00	43.00
BM05 - Inseam length	60.50	66.50	72.50	78.50
BM17 - Side length (waistband excluded)	74.50	81.50	88.50	95.50

# KARIBAN

K701

## Kids' jogging bottoms

### Colours information



**Black**

RVB : 35,35,37  
Pantone C : Black  
Pantone TCX : 19-4004TCX



**Navy**

RVB : 41,46,56  
Pantone C : 433C  
Pantone TCX : 19-4012TCX



**Oxford Grey**

RVB :  
Pantone C : Based on Cool gray 7C  
Pantone TCX : Based on 16-3850TCX



**White**

RVB : 236,236,252  
Pantone C : White  
Pantone TCX : 11-0601TCX

### Logistic



1



20

Sizes	Width (cm)	Height (cm)	Length (cm)	Net weight (kg)	Gross weight (kg)	Pieces/Box	Pieces/Bundle
6/8 ans	40.00	24.00	60.00	0.00000	0.00000	20	0
8/10 ans	40.00	24.00	60.00	0.00000	0.00000	20	0
10/12 ans	40.00	26.00	60.00	0.00000	0.00000	20	0
12/14 ans	40.00	26.00	60.00	0.00000	0.00000	20	0